



# Operation Manual

## Product Name

Controller Setting Kit  
Installation Manual (For Windows® 8.1)

## Model/Series

LEC-W2  
JXC-W2

**SMC Corporation**

# Installation Procedure of Driver and Software for the LEC-W2 and JXC-W2 (For Windows® 8.1)

## 0. Preparation

Prepare the following items before using this setting software (ACT Controller).

### 0.1 Applicable Computer

This software can be used on a computer with Windows® 8.1 32bit or 64bit operating systems.

Before starting the installation, please implement the following points:

- Login by a user account with authority of Administrator
- Terminate all other applications
- Download USB driver in advance and decompress it to a retrievable location, such as the desktop, on the PC.

### 0.2 Preparation of USB Cable

Prepare a communication cable LEC-W2-C, and an USB cable (A-miniB) LEC-W2-U for LEC-W2.

Prepare a communication cable JXC-W2-C, and an USB cable (A-miniB) JXC-W2-U for JXC-W2.

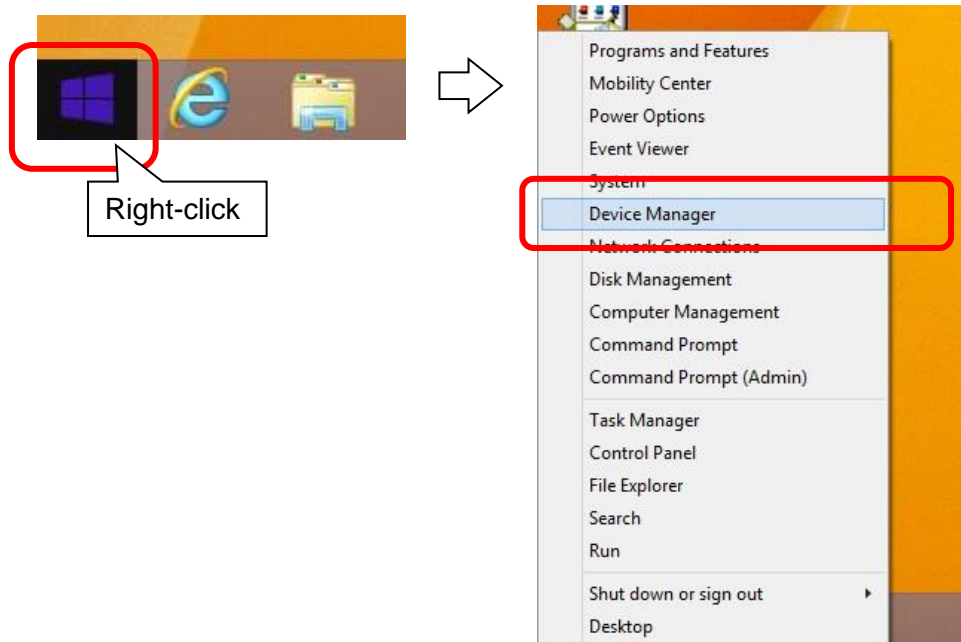
## 1. Installation

### 1.1 Installation of the Communication Unit Driver

(1) Connect the USB cable to the USB port of the computer.

\* A message may be displayed in the bottom right corner of the computer display. Please wait until the message disappears. If no message is displayed, proceed to the next step.

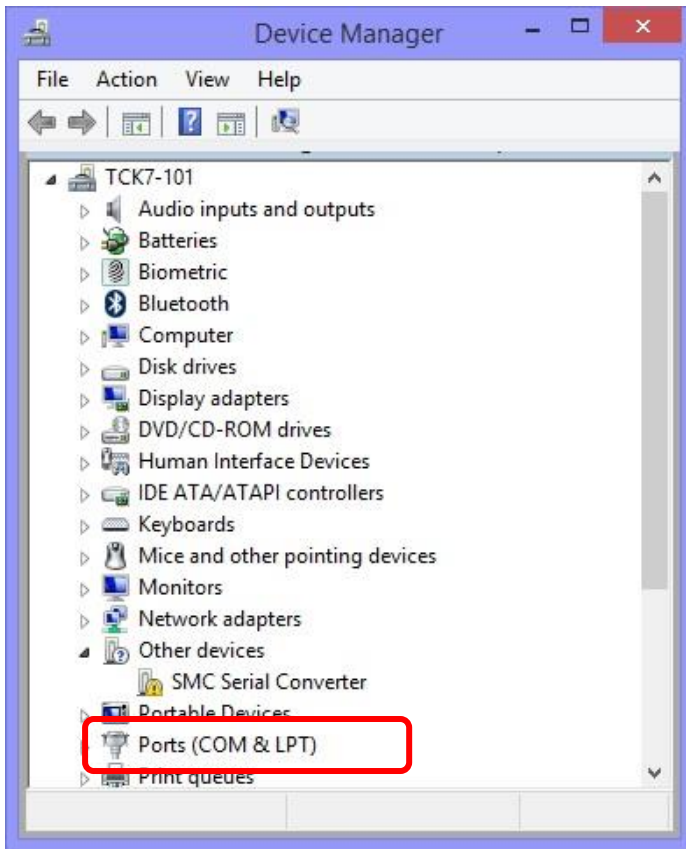
(2) Right-click the Start menu, and select the "Device Manager".



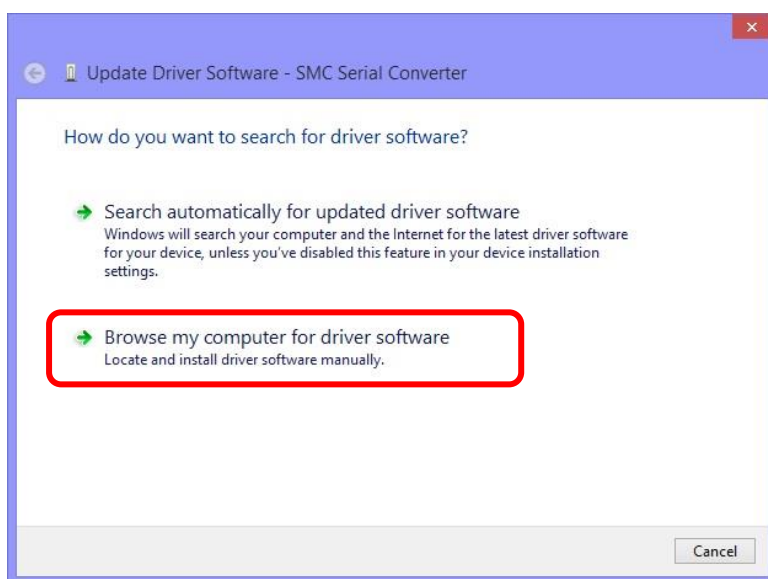
(3) "SMC Serial Converter" has been added to the "Other device".

Right-click the "SMC Serial Converter", and select the "Update Driver Software".

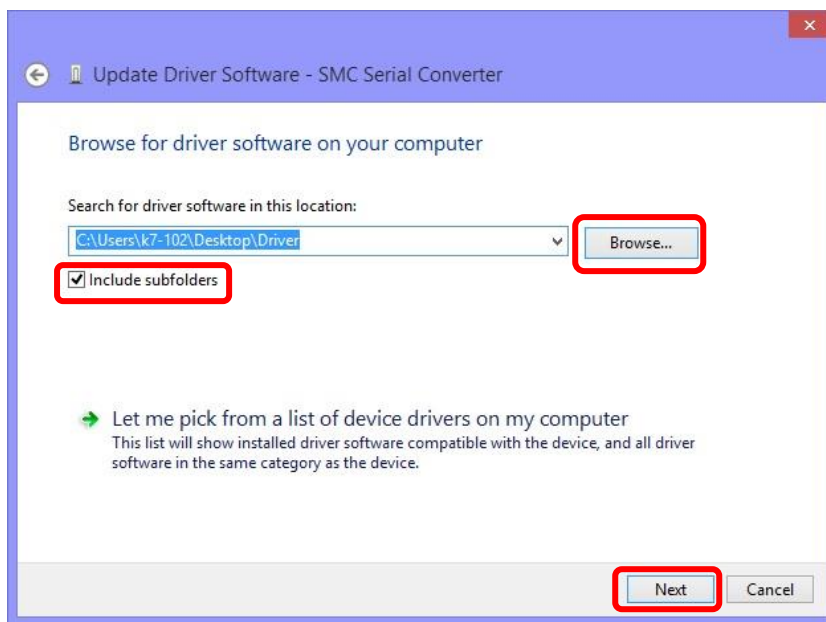
\* The "Update Driver Software" may not be displayed when the automatic retrieval processing is executed. Please try again after waiting a few minutes.



(4) Click the "Browse my computer for driver software".

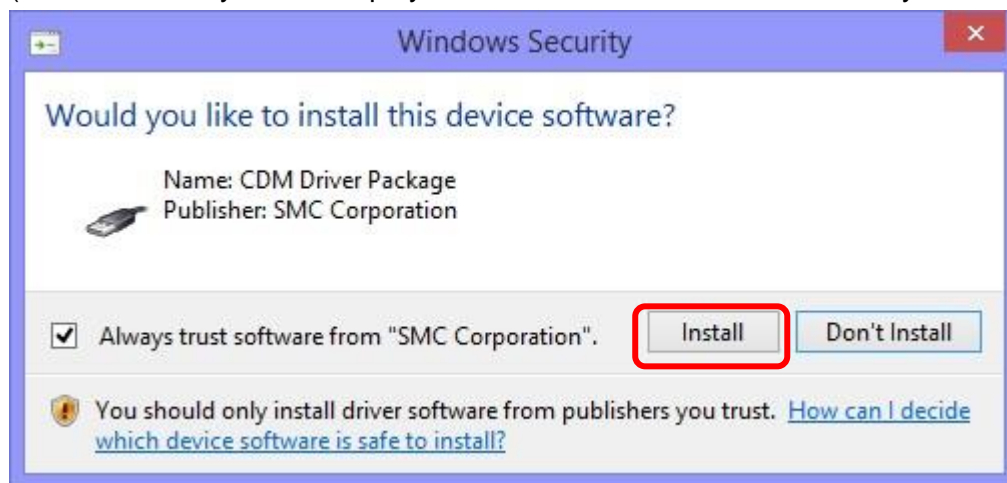


- (5) Click the "Browse", and select the folder where the USB driver was stored.  
Check the "Include subfolders".

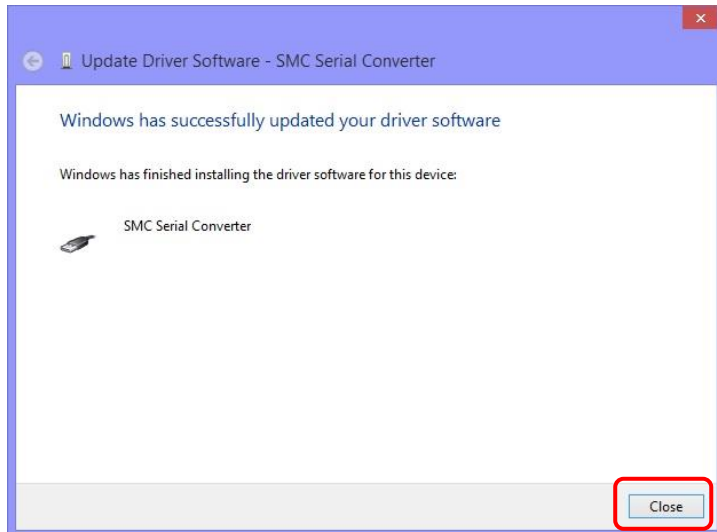


Click the "Next".

- (6) The following confirmation screen is displayed. Select the "Install".  
(This screen may not be displayed if the SMC USB driver was already installed on the PC.)



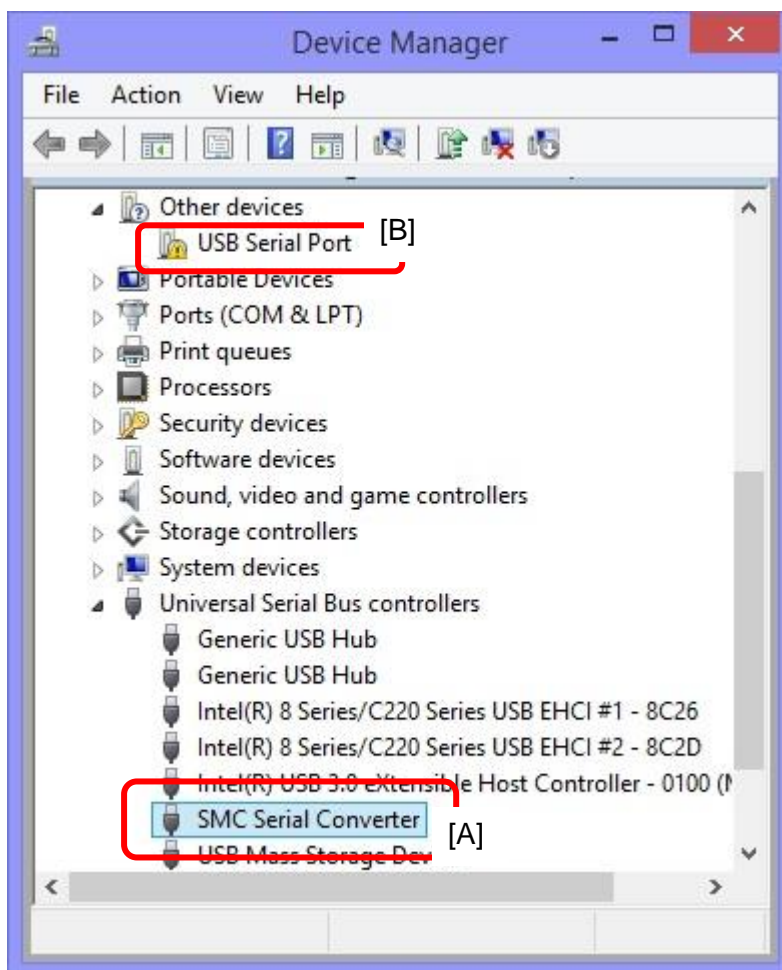
(7) The following display appears when installation is completed. Click the "Close".



(8) Display the "Device Manager" again.

Confirm that the "SMC Serial Converter" (Part A in the lower figure) was added to the "Universal Serial Bus controllers".

Then, right-click the "USB Serial Port" (Part B in the lower figure) in the "Other devices", and select the "Update Driver Software". Install it again following the same procedure from (4) to (7).



## 1.2 Installing the Setting Software (ACT Controller)

Start up \ACT Controller\JP(Ver1200)\Setup.exe. Installation process starts.  
Install the software according to the instructions displayed on the screen.

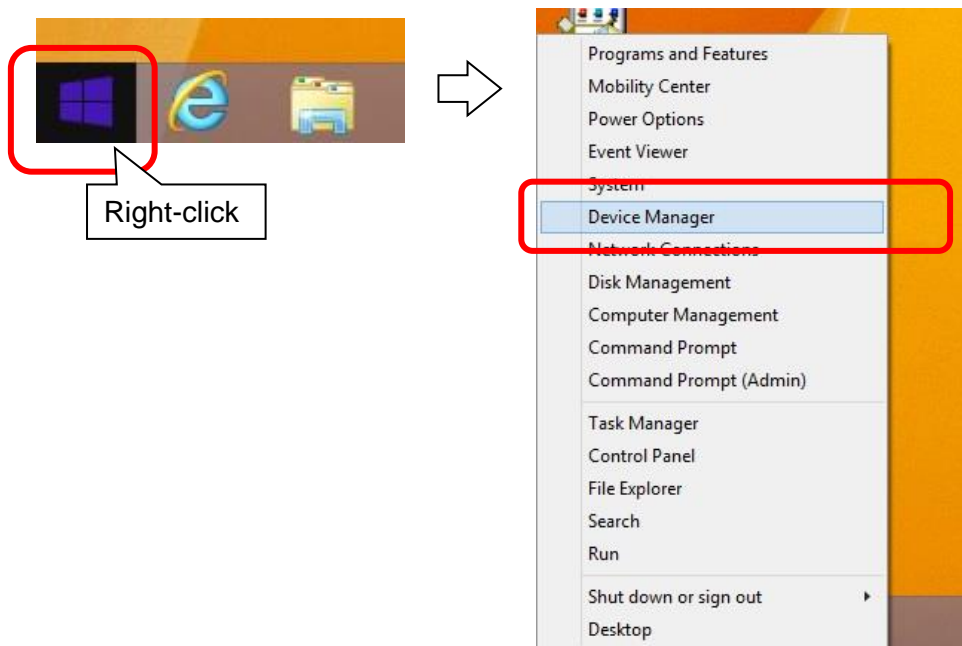
The "ACT Controller Menu" is displayed on the desktop when the installation is completed. Click the icon to start the software.

Be sure to read #2. Check the Communication Port" before starting the software.

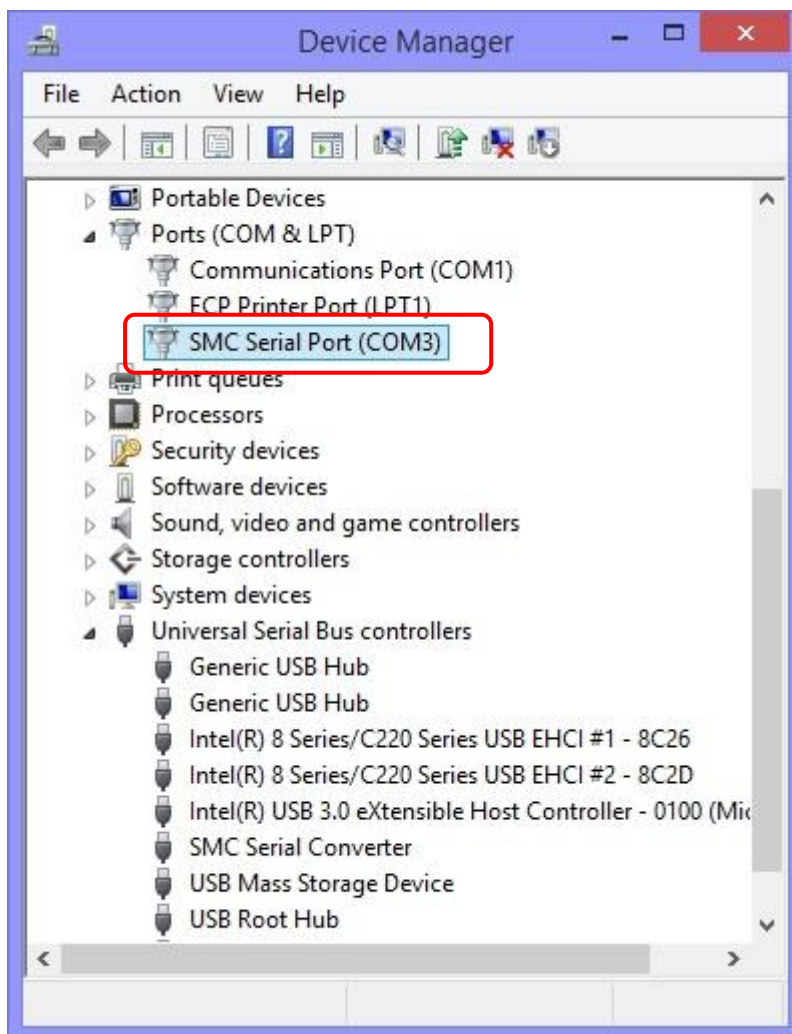
## 2. Check the Communication Port

Before using this setting software, it is required to check the communication port number (COM No.) that has been assigned to the communication unit. Check the COM No. using the Device Manager.

Right-click the Start menu, and select "Device Manager".



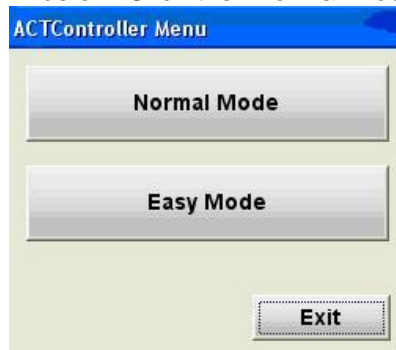
The COM No. is shown next to the "SMC Serial Port" in the "Ports (COM&LPT)".  
(In the case of the lower figure, the COM No. is "3".)



The COM No. will change depending on the USB port where the communication cable is currently connected to. Please check it after connecting the communication unit.

### 3. Start Menu

An ACT Controller Menu icon is displayed on the desktop after installing the software. Double click the icon to display the menu shown below. Click the "Normal Mode" or "Easy Mode".



### 4. Communication Setting

When activating the "Normal mode" or "Easy mode", the software recognizes the connected controller automatically.

However, if the communication settings such as COM port number are incorrect, communication cannot be established.

Therefore, the communication setting is required.

Confirm the following points before starting the communication.

That power is supplied to the connected controller.

The controller and the computer are connected to each other via the communication unit.

#### <Normal Mode>

By selecting the "Action" -> "System" -> "Setting" in the menu bar, the window shown below is displayed. Set the COM port number as confirmed according to the instructions in "2. Check of the communication port".

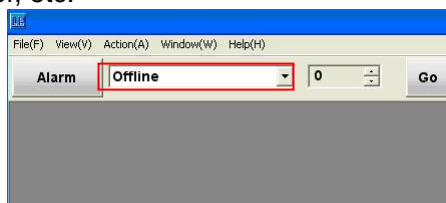
Maximum axis	Sets the number of axis
COM port	Sets the COM port No. of the communication unit
Communication speed	Specifies the communication speed to the controller * The default communication speed of the controller (LEC/JXC) is 38400 bps.

Item	Unit	Remark
Max ID		4 1 - 32
Port No.	COM4	1 - 20
Comm Sp 1	Disable	9600bps
Comm Sp 2	Disable	19200bps
Comm Sp 3	Enable	38400bps
Comm Sp 4	Disable	57600bps
Comm Sp 5	Disable	115200bps

Selecting the "Action" -> "System" -> "Reset" after the setting, will initiate the software to recognize the connected controller.



\* The controller is not recognized if "Offline" is displayed in the red frame on the screen after starting the "Normal mode" as shown in the figure below. Check the communication port setting, wiring, power supply to the controller, etc.



When the controller is recognized correctly, indication other than "Offline" (01-\*\*\*, etc.) is displayed on the starting screen as shown in the figure below.



### <Easy Mode>

The communication setting screen is displayed if the communication cannot be established. The operation will be available when the connection is confirmed after the communication setting.

## 5. Functions of Each Mode

Refer to the "ACT Controller" -> "ACT Control Help" in the Program menu (Start button on desktop screen) for the functions of each mode after installation.

### Precautions

**Do not turn off the controller for communication while the setting software (ACT Controller) is running.**

**Do not connect or disconnect the cable while the setting software is running.**

The communication is being established continuously while the setting software is running. Disconnecting the cable during communication may cause the software to become corrupt.

*\*Windows® 8.1 is either registered trademark of Microsoft Corporation in the United States and other countries*

Revision history
No.JXC※-OMU0012 December/2016 1st printing

## SMC Corporation

4-14-1, Sotokanda, Chiyoda-ku, Tokyo 101-0021 JAPAN

Tel: + 81 3 5207 8249 Fax: +81 3 5298 5362

URL <http://www.smcworld.com>

---

Note: Specifications are subject to change without prior notice and any obligation on the part of the manufacturer.

© 2016 SMC Corporation All Rights Reserved