

# Made to Order Common Specifications:

## -XC103: Cylinder for the Foot Type or the Rod Flange Type Mounting Bracket



### 68 Cylinder for the Foot Type or the Rod Flange Type Mounting Bracket

Symbol

**-XC103**

For cylinders with a foot type or a rod flange type mounting bracket (The rod end length is 5 mm longer than that of the standard model.)

#### Applicable Series

Series	Description	Model	Action	Note	Vol. no. (for std model)
JCQ	Compact cylinder	JCQ	Double acting, Single rod		Web Catalog

#### How to Order

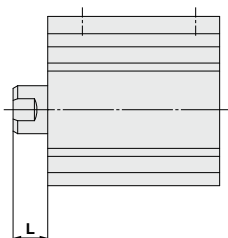
JC(D)QA Standard model no. - **XC103**

● Cylinder for the foot type or the rod flange type mounting bracket

#### Specifications

Mounting type	Both ends tapped
Dimensions	See below.
Specifications other than above	Same as standard type

#### Dimensions (Dimensions other than below are the same as standard type.)



Bore size	L (mm)
32	10
40	11
50	13
63	13
80	14
100	15

Dimensions other than those above are the same as those of the standard model.