

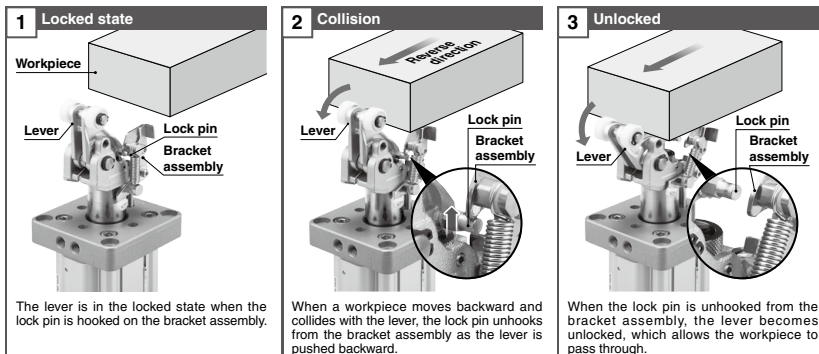
Made to Order Common Specifications -XC102: Lock Release Specification



67 Lock Release Specification

Symbol
-XC102

Prevents lever damage when a transferred workpiece moves backward
(Prevents damage by releasing the locked lever when a pallet suddenly moves backward and collides with the lever)



Applicable Series

| Series | Description | Model | Action | Note | Vol. no. (for std model) |
|--------|-----------------------------|-------|---------------|------|--------------------------|
| RS2H | Heavy duty stopper cylinder | RS2H | Double acting | | Web Catalog |

Specifications

| | |
|---------------------------------|--------------------------------------|
| Lever | With lock mechanism |
| Shock absorber | Shock absorber with scraper (Option) |
| Specifications other than above | Same as the standard type |

■ The main product specifications and dimensions are the same as those of the standard model.

How to Order

RS2H 50 30 D L D M9BW XC102

1 2 3 4 5 6 7 8 9 10 11
With lock mechanism • Lock release specification •

| 1 Bore size | 2 Port thread type | 3 Piping direction | 4 Cylinder stroke | 5 Action | 6 Roller material |
|----------------------------------|--------------------------|--|---------------------------------------|---|---------------------------|
| 50 50 mm 63 63 mm 80 80 mm | Nil Rc TN NPT TF G | Nil Flange side Axial direction (tube) | 30 30 mm (ø50, ø63) 40 40 mm (ø80) | D Double acting B Double acting spring type T Single acting/spring extend | L Resin M Carbon steel |

7 Option*1

| | |
|-----|-------------------------------|
| Nil | Without option |
| C | With cancel cap |
| S | With lever detection switch*2 |

*1 Options can be combined.
Indicate the option symbols in the order of "C" then "S."

*2 For details on the lever detection switch, refer to the standard model.

9 Shock absorber

| | |
|-----|-----------------------------|
| Nil | Standard |
| Y | Shock absorber with scraper |

10 Auto switch

| | |
|-----|---------------------------------------|
| Nil | Without auto switch (Built-in magnet) |
|-----|---------------------------------------|

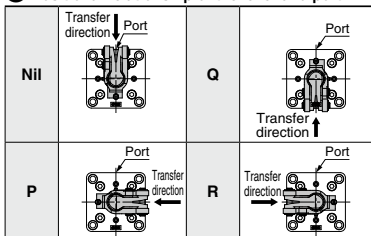
* The applicable auto switches are the same as those for the standard model.

* Auto switches are shipped together with the product but do not come assembled.

11 Number of auto switches (Number of auto switches mounted)

| | |
|-----|---|
| Nil | 2 |
| S | 1 |

8 Positional relationship of the lever and port



Replacement Parts/Shock Absorber

| Bore size (mm) | Order no. | |
|----------------|-----------|----------------|
| | Standard | With scraper |
| 50 | RS2H-R50 | RS2H-R50-X2666 |
| 63 | RS2H-R63 | RS2H-R63-X2666 |
| 80 | RS2H-R80 | RS2H-R80-X2666 |

* The shock absorber can be replaced individually.
Mounting of the built-in shock absorber with a scraper is interchangeable with the standard shock absorber (RS2H-R□).