

△ Contact our sales office for delivery dates and prices since this is a special model.

**SMC** P.G.Information (Specialized Product)

SP143X-023J  
P: SZ

## Speed Controller / In-line Type AS\*000-\*-\* -X750

SMC Corporation  
4-14-1, SOTO-KANDA,  
CHIYODA-KU,  
101-0021, JAPAN  
URL: <http://www.smcworld.com>

### ■ Features: Improved environmental resistance

- All metal exterior  
(Stainless steel is used for main portion)
- Body surface coated with epoxy resin
- Changeable seal material per temperature spec



### ■ Specifications:

Fluid	Air
Proof pressure	1.5MPa
Operating pressure range	0.05 to 1MPa

Note) Please refer to Best Pneumatics No.6 (Speed Controller with One-touch Fittings/In-line type AS series) for flow characteristics.

### ■ How to Order:

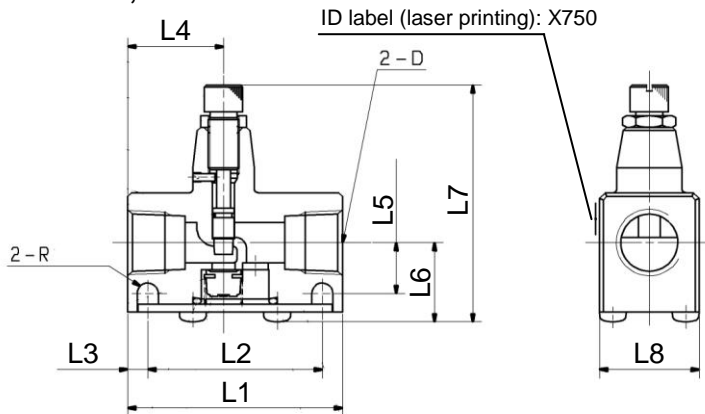
AS	2	000 –	01	-	H	- X750	
	●		●		●	●	
<b>Body size</b>		<b>Thread type</b>	<b>Port size</b>		<b>Ambient and fluid temperature</b> <sup>Note1)</sup>		
2	1/8, 1/4 standard	Nil	Rc	01	1/8	Nil	Standard temperature (-5 to 60deg.C)
3	3/8 standard	N	NPT	02	1/4	H	High temperature (-5 to 80deg.C)
4	1/2 standard	F	G	03	3/8	L <sup>Note2)</sup>	Low temperature (-30 to 60deg.C)
			04	1/2			

Note1) No freezing  
Note2) AS2000 is excluded.

In-line type	Port size			
	1/8	1/4	3/8	1/2
AS2000	●	●	-	-
AS3000	-	●	●	-
AS4000	-	●	●	●

## ■ Dimensions mm:

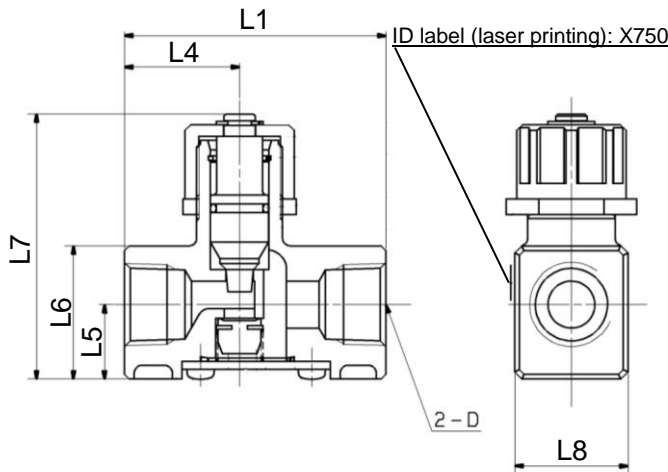
### AS2000, AS3000



#### Component Parts

- Body material: ZDC (AS2000)  
ADC (AS3000)
- Material (other than body): Stainless steel
- Seal material: NBR (Standard temperature)  
FKM (High temperature)  
CR (Low temperature)

### AS4000

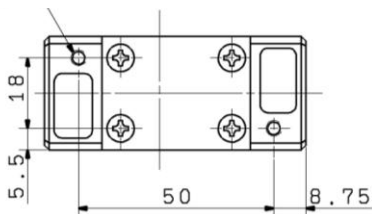


#### Component Parts

- Body material: ADC
- Handle material: ZDC
- Lock nut material: ZDC
- Material (other than body): Stainless steel
- Seal material: NBR (Standard temperature)  
FKM (High temperature)  
CR (Low temperature)

2-M4x0.7

Effective thread depth 6



Model	Port size D	L1	L2	L3	L4	L5	L6	L7 <sup>Note)</sup>		L8	R
								MAX.	MIN.		
AS2000-*01*-X750	1/8	40	30	5	17	10	15.5	54.5	50	16	R2.25
AS2000-*02*-X750	1/4	40	30	5	17	11.5	17	56	51.5	20	R2.25
AS3000-*02*-X750	1/4	56	45.5	5.25	25	13.25	20.6	68	61	26	R2.75
AS3000-*03*-X750	3/8	56	45.5	5.25	25	13.25	20.6	68	61	26	R2.75
AS4000-*02*-X750	1/4	67.5	-	-	29.5	19	34	76.5	68.5	29	-
AS4000-*03*-X750	3/8	67.5	-	-	29.5	19	34	76.5	68.5	29	-
AS4000-*04*-X750	1/2	67.5	-	-	29.5	19	34	76.5	68.5	29	-

Note) Reference dimensions for threads after installation.

⚠ Caution: To ensure the safest possible operation of this product, please be sure to thoroughly read the "Safety Instructions" in our "Best Pneumatics" catalog before use.